



Natural Stone Tile

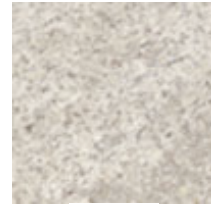
Stone Types

- **Granite:** One of the hardest and densest of all natural stone. Next to the diamond, it is the hardest of the natural stones.

Resists staining and scratching better than any other natural stone
Beautiful in foyers, bathrooms, libraries or kitchens or as an accent with other natural stones

Made up of mainly quartz, feldspar and mica

Mother nature produces a variety of rich colors each with their own distinctive characteristics



Granite

- **Marble:** Marble is crystallized limestone that comes in many different color variations and usually displays a veining pattern that adds to its uniqueness. Marble is a timeless addition to any home, bearing the signs and marks of history from thousands of years. Marble is more porous than granite, making it more susceptible to staining and therefore is more suitable for foyers, bathrooms, fireplaces, studies or libraries.



Marble

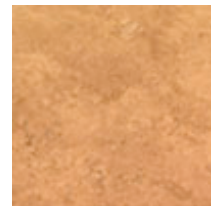
- **Limestone:** This stone has a more subtle look and is often offered in a “honed” or matte finish. This stone will require preventative maintenance over time, as it is very porous.

A softer stone that is very porous

Created by the accumulation of organic materials such as shells and coral.

May not be suitable for all areas in the home because it will stain easily

Should be sealed to protect the stone’s natural beauty



Limestone

- **Travertine:** Unique looking due to the “fill process”. In its original form, Travertine has thousands of holes running through it. These holes are filled and then the stone is polished. The stone polishes to a high sheen and the fill areas remain dull creating a beautiful floor. Like Limestone, this stone will require preventative maintenance over time, due to its porosity.

From the limestone family-so it shares some similar characteristics such as being soft and porous

Comprised of layers of mineral composites that cool and crystallize into travertine



Travertine

- **Slate:** this rustic-looking stone has become increasingly popular over the years. Comes in various colors and shades. Can also be used in outdoor installations.
 - The most dramatic of variations
 - Warm and earthy
 - Extremely durable
 - Rich reds, oranges and golds to mauve, lavender, green, blue, black, rust, brown
 - Beautiful in kitchens, bathrooms, foyers, anywhere in the home
 - All slate has a natural clefing along the surface which give this stone its unique textural look of layers.



Slate

- **Tumbled Stone:** has an antique look. They come in many sizes and are many times used in borders or decorative strips.
 - Old world look that is recreated through modern means
 - Marble, travertine and limestone that are tumbled and distressed to evoke a timeworn look of stone from centuries past
 - Used in accent strips, mosaics, chair rails, smaller sizes such as 1x1, 4x4, 6x6
 - A design element that is rustic and elegant at the same time



Tumbled Stone

Tile Sizes

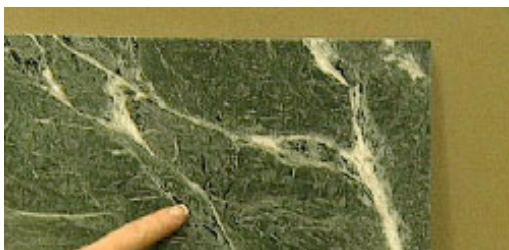
- Typical floor tile sizes are: 12"x12", 16"x16", and 18"x18".
- Tumbled Stone is also available in smaller sizes such as 4"x4" and 8"x8" and even smaller in many of the intricate decorative borders.



Tumbled Stone Deco

Natural Characteristics

- It's important to remember that natural stone is a product of Mother Nature. No two pieces of natural stone tile will look the same. Veining and crystallization are natural characteristics of the stone, not imperfections.
- Different stones have different levels of hardness and porosity and are best for different uses. Be sure to ask your design consultant about which stone is right for the different areas in your home depending on whether it is a wet area, like a bath or a high traffic area such as a kitchen.





Veining in Marble



Marble

Selecting Grout

- Natural Stone grout lines are typically done with unsanded grout and usually much thinner than ceramic tile installations.
- Design Options-grout can match, contrast or coordinate with your stone tile. Remember grout will outline each tile creating a visual picture frame. If you want the grout to be less noticeable, select a grout that is close in color to the stone. A contrasting grout color either darker or lighter will enhance the appearance of the grout lines creating a checkerboard effect.
- Grout darkens as it ages so sealing is recommended
- Remember that grout colors can change slightly from the sample in the design center to the grout installed in your home based on the temperature and humidity when the tile is installed.



The Value of Upgrading

- You will have a wider selection of types, sizes and colors.
- You will have access to more durable types of stones.
- Decorative options such as accent strips, mosaics, patterns etc.
- A timeless finish that brings value to any home.





Slate

Created by Design Center Solutions © 2004